

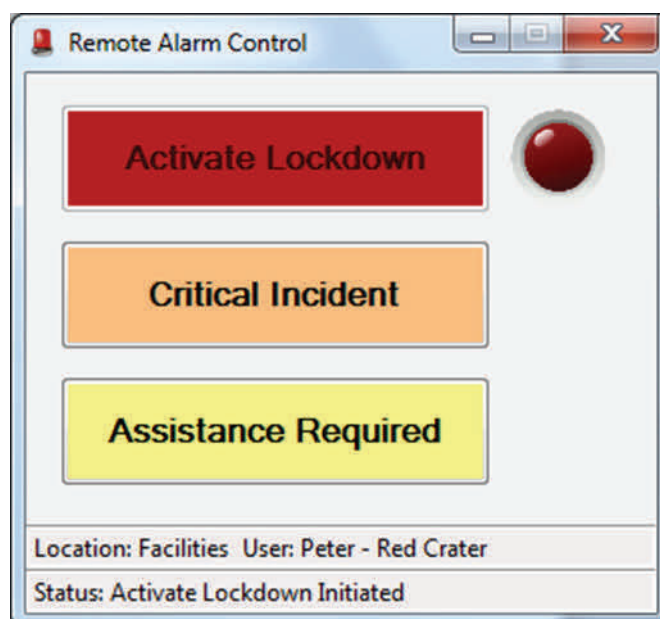
Remote Alarm Control

Trigger security alarm notifications from any PC

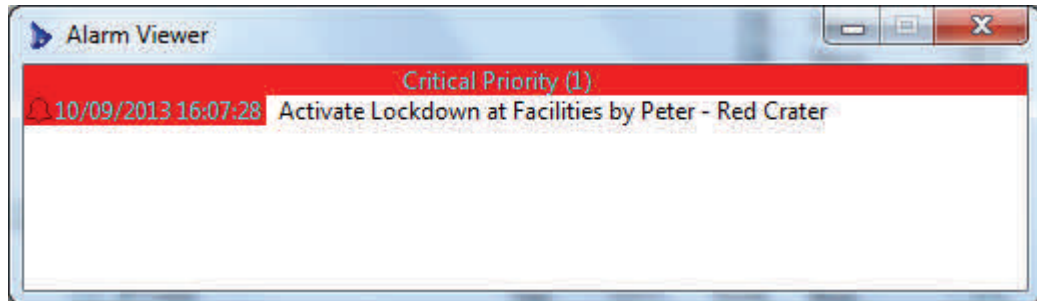
Many organisations face potential threats to the safety of their personnel, either due to hazardous work environments or through confrontations with other people. Traditionally environments where these threats can occur are handled through duress pendants supplied to key staff and hardware panic buttons installed at critical locations. While these devices are very effective they are expensive to be deployed widely and therefore generally aren't universally available to all personnel.

The Remote Alarm Control is a cost effective alternative that is intended to be installed on every desktop PC. It is essentially a software version of traditional duress pendants or panic buttons but which is available to all staff members via a desktop shortcut. The user interface is easy to use with three buttons that will generate different alarms based on the severity of the incident that needs to be addressing.

Activate Lockdown	This will be triggered in the most severe cases where there is a high degree of threat to personal safety (e.g. an assailant is threatening people with a weapon). This will trigger the highest alarm possible within the security system and automatically lock doors as appropriate.
Critical Incident	This will be triggered when an important security event has occurred, but it is not severe enough to warrant a lockdown (e.g. someone is exhibiting threatening behaviour but not likely to be of high risk to personal safety).
Assistance Required	This is when a person is uncomfortable with a current situation and requires some form of assistance from security staff (e.g. requires an after hours escort to back to their vehicle).



When a button is pushed the Remote Alarm Control reports the person and the location as an alarm in the Gallagher Command Centre Alarm Viewer and optionally as an email notification.



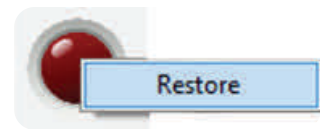
When the security operator acknowledges the alarm its state in the Remote Alarm Client will change from flashing red to solid orange denoting the security staff are responding to the event. At any time a user is able to clear the alarm if the incident is over by using the right mouse restore function.



Flashing = Active Alarm



Solid Orange = Acknowledged



Restore = Clear Alarm

The software installation allows button labels to be customised and alarm text to be changed to better represent the intended requirements at each site. The software can also work in a full Active Directory integrated mode or stand-alone mode to control user access to the three levels of duress.

Specifications

Supported Access Control	Cardax FT/Gallagher Command Centre (versions 6.10, 7.00, 7.05 and 7.10) Controller API Version 6.01 and above.
Supported Domain Controllers	Windows Server 2008 (all versions) Windows Server 2012 (all versions)
Workstation Requirements	<u>Operating Systems:</u> Windows XP , Vista, Windows 7 (all versions) and Windows 8 (all versions)

For more information contact:-

Peter Neil

p: +64 7 829 5345

m: +64 21 896 305

e: peter.neil@redcrater.co.nz